

# Bass Clarinet

## Super-Class Musician Requirements for High School Band

2<sup>nd</sup> Nine Weeks

Etudes: 1, 2, and 3

3<sup>rd</sup>-Nine Weeks

Pass-off all Concert Evaluation Music

4<sup>th</sup>-Nine Weeks

1. Etudes 4, 5, and 6.
2. Play all 12 Major Scales and Chromatic Scale in 5 minutes or less (memory optional)
3. Rhythms: Write in counts in-advance and you will be asked to demonstrate a sampling.

**\*\*All Pass-offs must be completed within the nine-weeks indicated. Each item counts as a test grade.**

**\*\*All scales must be played the full range of the instrument.**

Allegretto - FISOLOLO

Musical score for 'Allegretto - FISOLOLO' in 3/4 time. The score consists of five staves of music. The first staff begins with a treble clef, a key signature of one flat (B-flat), and a 3/4 time signature. The tempo is marked 'Allegretto' and the mood is 'FISOLOLO'. The first measure is marked with a first ending bracket and a dynamic of *f*. The second staff features a dynamic of *p* and a slur over the first two measures. The third staff has a dynamic of *f* and a repeat sign. The fourth staff has a dynamic of *p* and a slur over the last two measures. The fifth staff concludes the piece with a repeat sign.

B-256

© Copyright 1973 by Southern Music Company, San Antonio, Texas 78292  
International Copyright secured. Printed in U.S.A. All rights reserved

Vivace

Musical score for 'Vivace' in 2/4 time. The score consists of six staves of music. The first staff begins with a treble clef, a key signature of one sharp (F#), and a 2/4 time signature. The tempo is marked 'Vivace'. The first measure is marked with a dynamic of *mf*. The score is a continuous piece of music with various rhythmic patterns and accidentals throughout.

B-256

Allegro moderato

3

*p*  
*leggiero*

*sempre staccato*

Allegro furioso

5

*f*

Allegretto grazioso

5

*p*

*f*

*p*

*rit.*

*a tempo*

*p*

*f*

Detailed description: This musical score consists of eight staves of music in treble clef, 4/4 time. The first staff begins with a measure rest followed by a dynamic marking of *p*. The second staff has a dynamic marking of *f*. The third staff has a dynamic marking of *p*. The fourth and fifth staves continue the melodic line. The sixth staff includes a *rit.* (ritardando) marking and a *p* dynamic. The seventh staff has a *f* dynamic. The eighth staff concludes the piece with a double bar line.

Marcia - Risoluto

6

*poco f*

*sf*

*sf*

*p dolce*

*cresc.*

*f*

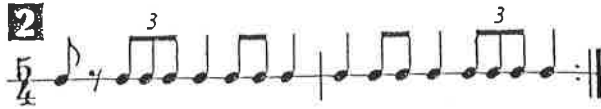
*sf*

*sf*

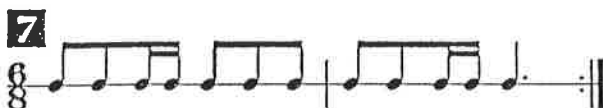
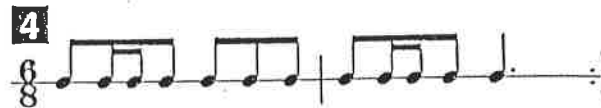
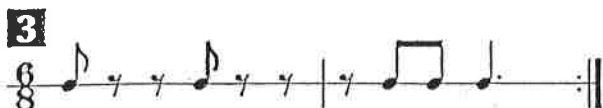
Detailed description: This musical score consists of five staves of music in treble clef, 6/8 time. The first staff begins with a measure rest followed by a dynamic marking of *poco f*. The second staff has dynamic markings of *sf* and *p dolce*. The third staff has a *cresc.* (crescendo) marking. The fourth staff has a dynamic marking of *f*. The fifth staff has dynamic markings of *sf* and *sf*. The piece concludes with a double bar line.

# RHYTHM STUDIES

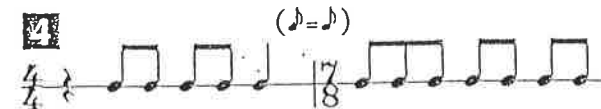
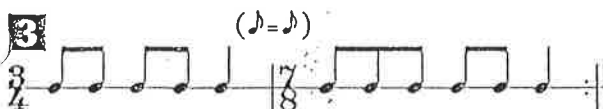
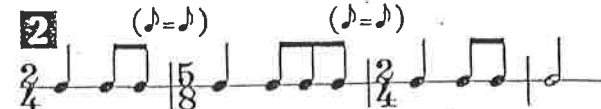
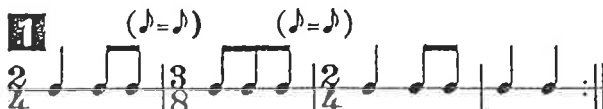
5 6  
4 4



6 9 12  
8 8 8



3 5 7  
8 8 8



# Full Range Scales

Clarinets/Bass  
Clarinet

In All Twelve Major Key Signatures

B/C



Musical notation for the B/C scale in C major, consisting of two staves. The first staff shows the ascending scale from B4 to C5, and the second staff shows the descending scale from C5 to B4.

F/G



Musical notation for the F/G scale in G major, consisting of two staves. The first staff shows the ascending scale from F4 to G5, and the second staff shows the descending scale from G5 to F4.



Musical notation for the continuation of the F/G scale, showing the descending scale from G5 to F4.

C/D



Musical notation for the C/D scale in D major, consisting of two staves. The first staff shows the ascending scale from C4 to D5, and the second staff shows the descending scale from D5 to C4.

G/A



Musical notation for the G/A scale in A major, consisting of two staves. The first staff shows the ascending scale from G4 to A5, and the second staff shows the descending scale from A5 to G4.

D/E



Musical notation for the D/E scale in E major, consisting of two staves. The first staff shows the ascending scale from D4 to E5, and the second staff shows the descending scale from E5 to D4.



Musical notation for the continuation of the D/E scale, showing the descending scale from E5 to D4.

(A/B)



Musical notation for the A/B scale in B major, consisting of two staves. The first staff shows the ascending scale from A4 to B5, and the second staff shows the descending scale from B5 to A4.

(E/F#)



Musical notation for the E/F# scale in F# major, consisting of two staves. The first staff shows the ascending scale from E4 to F#5, and the second staff shows the descending scale from F#5 to E4.



Musical notation for the continuation of the E/F# scale, showing the descending scale from F#5 to E4.

# Clarinet / Bass Clarinet

(E/G $\flat$ ) 



(B/D $\flat$ ) 

G $\flat$ /A $\flat$  

D $\flat$ /E $\flat$  

A $\flat$ /B $\flat$  

E $\flat$ /F 



## Full Range Chromatic - For Clarinets Only





