

Tuba

## Third Class Musician Requirements

### 2<sup>nd</sup> Nine Weeks

- 1 . Scales: Bb, Eb, Ab, F, C
- 2 . Chromatic Scale

### 3<sup>rd</sup> Nine Weeks

- 1 . Pass-off contest music

### 4<sup>th</sup> Nine Weeks

- 1 . Terms Test
- 2 . Sight read in 2/4 & 4/4
- 3 . Rhythms - write in counts. Students will be asked to clap a sample.
- 4 . Arpeggios
- 5 . Recite the order of sharps and flats

All pass-offs must be completed within the nine weeks indicated and each item counts as a test grade. All scales must be played the full range of your instrument.

# Tuba

## Full Range Scales

In All Twelve Major Key Signatures

Concert B<sup>b</sup>



Concert F



Concert C



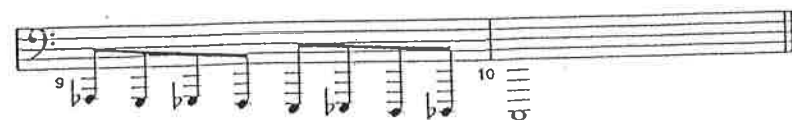
Concert A<sup>b</sup>



Concert E<sup>b</sup>



### Full Range Chromatic - Tubas Only



Handwritten musical score for a single melodic line in common time (C). The score is divided into measures numbered 10 through 72. The notation includes eighth and sixteenth notes, rests, and various articulation marks such as accents and slurs. The first line (measures 10-18) features a rhythmic pattern of eighth notes with occasional sixteenth notes. The second line (measures 19-24) continues this pattern. The third line (measures 25-30) shows a change in rhythm with more quarter notes. The fourth line (measures 31-36) returns to eighth notes. The fifth line (measures 37-42) features a mix of eighth and sixteenth notes. The sixth line (measures 43-48) includes slurs and accents. The seventh line (measures 49-54) has a more sparse rhythmic texture with many rests. The eighth line (measures 55-60) continues with a mix of note values. The ninth line (measures 61-66) features slurs and accents. The tenth line (measures 67-72) concludes the section with a final flourish.

Handwritten musical score for a single melodic line in 6/8 time. The score is divided into measures numbered 201 through 209. The notation includes eighth notes and rests. The first line (measures 201-209) shows a rhythmic pattern of eighth notes with some rests.

Handwritten musical score for a single melodic line in 6/8 time. The score is divided into measures numbered 210 through 217. The notation includes eighth notes and rests. The first line (measures 210-217) shows a rhythmic pattern of eighth notes with some rests.

# SECTION 5

## Arpeggios

This page for  
BASSES ONLY

Piccolos turn to\_ page 19  
Flutes turn to\_ page 19  
Violins turn to\_ page 19  
Saxophones turn to page 20  
Oboes turn to\_ page 20  
Clarinets turn to\_ page 18  
Cornets turn to\_ page 21  
Trombones turn to page 22  
Baritones turn to\_ page 22  
Horns turn to\_ page 21  
Bassoons turn to\_ page 22  
Cellos turn to\_ page 22

*(Use different articulations)*

Upper notes for String Bass

The image contains five staves of musical notation, each representing a different bass instrument. Each staff begins with a circled number and the instrument's name in a circle, followed by a key signature and a 4/4 time signature. The notation consists of eighth-note arpeggios. The staves are:

- 1 B $\flat$  (Bassoon): Key signature of two flats (B $\flat$ , E $\flat$ ).
- 2 F (Fagott): Key signature of one flat (F).
- 3 C (Kontrabaß): Key signature of one flat (F).
- 11 A $\flat$  (Tuba): Key signature of three flats (B $\flat$ , E $\flat$ , A $\flat$ ).
- 12 E $\flat$  (Euphonium): Key signature of three flats (B $\flat$ , E $\flat$ , A $\flat$ ).