

Flute

Third Class Musician Requirements

2nd Nine Weeks

- 1 . Scales: Bb, Eb, Ab, F, C
- 2 . Chromatic Scale

3rd Nine Weeks

- 1 . Pass-off contest music

4th Nine Weeks

- 1 . Terms Test
- 2 . Sight read in 2/4 & 4/4
- 3 . Rhythms - write in counts. Students will be asked to clap a sample
- 4 . Arpeggios
- 5 . Recite the order of sharps and flats

All pass-offs must be completed within the nine weeks indicated and each item counts as a test grade. All scales must be played the full range of your instrument.

Full Range Scales

In All Twelve Major Key Signatures

Flute
Bells

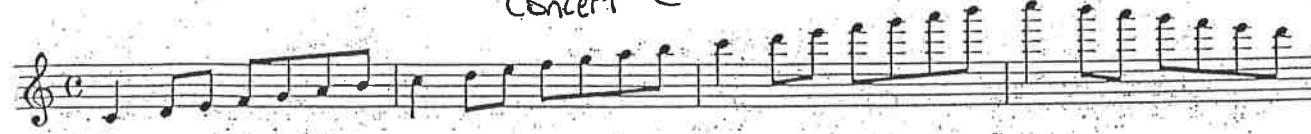
Concert B^b



Concert F



Concert C



Concert A^b



Concert E^b



Full Range Chromatic



Handwritten musical score for guitar, measures 10 through 72. The score is written on ten staves, each beginning with a common time signature (C). The measures are numbered 10 through 72. The notation includes various rhythmic patterns, including eighth and sixteenth notes, and rests. Some measures contain dynamic markings such as accents (>) and breath marks (v).

Handwritten musical score for guitar, measures 201 through 209. The score is written on one staff, beginning with a common time signature (C) and a 6/8 time signature. The measures are numbered 201 through 209. The notation includes various rhythmic patterns, including eighth and sixteenth notes, and rests.

Handwritten musical score for guitar, measures 210 through 217. The score is written on one staff, beginning with a common time signature (C). The measures are numbered 210 through 217. The notation includes various rhythmic patterns, including eighth and sixteenth notes, and rests.

SECTION 5

Arpeggios

This page for
C FLUTE, ~~_____~~
~~_____~~

Clarinets turn to_ page 18
Saxophones turn to_ page 20
Oboes turn to_ page 20
Cornets turn to_ page 21
Trombones turn to_ page 22
Baritones turn to_ page 22
Horns turn to_ page 21
Bassoons turn to_ page 22
Cellos turn to_ page 22
Basses turn to_ page 23.

(Use different articulations)

The image contains five staves of musical notation, each representing a different instrument part for arpeggios. Each staff begins with a circled instrument key signature and a dynamic marking. The notation consists of a treble clef, a 4/4 time signature, and a series of eighth-note arpeggios. The first staff is for Bb (B-flat) with a dynamic of *mf*. The second staff is for F (F) with a dynamic of *mf*. The third staff is for C (C) with a dynamic of *mf*. The fourth staff is for Ab (A-flat) with a dynamic of *mf*. The fifth staff is for E (E) with a dynamic of *mf*. Each staff concludes with a double bar line and a fermata over the final note.