

## Second Class Musician Requirements

### 2<sup>nd</sup> Nine Weeks

- 1 . Scales: Db, D, G, Gb
- 2 . Chromatic

### 3<sup>rd</sup> Nine Weeks

- 1 . Pass-off contest music
- 2 . Lip slur/ Finger exercise

### 4<sup>th</sup> Nine Weeks

- 1 . Terms Test
- 2 . Sight read in  $\frac{3}{4}$  & Cut Time
- 3 . Rhythms = write in counts, student will be asked to clap a sample
- 4 . Arpeggios
- 5 . Thirds

All pass-offs must be completed within the nine weeks indicated and each item counts as a test grade. All scales must be played the full range of your instrument.

Tuba

Full Range Scales

In All Twelve Major Key Signatures

G

A musical staff in bass clef with a common time signature (C). It contains a scale starting on G2 and ascending to G3. The notes are: G, A, B, C, D, E, F#, G. The staff ends with a double bar line and a repeat sign.

D

A musical staff in bass clef with a common time signature (C). It contains a scale starting on D2 and ascending to D3. The notes are: D, E, F#, G, A, B, C, D. The staff ends with a double bar line and a repeat sign.

G $\flat$

A musical staff in bass clef with a common time signature (C). It contains a scale starting on G $\flat$ 2 and ascending to G $\flat$ 3. The notes are: G $\flat$ , A $\flat$ , B $\flat$ , C, D, E, F, G $\flat$ . The staff ends with a double bar line and a repeat sign.

D $\flat$

A musical staff in bass clef with a common time signature (C). It contains a scale starting on D $\flat$ 2 and ascending to D $\flat$ 3. The notes are: D $\flat$ , E $\flat$ , F, G, A, B $\flat$ , C, D $\flat$ . The staff ends with a double bar line and a repeat sign.

*Full Range Chromatic - Tubas Only*

A musical staff in bass clef with a common time signature (C). It contains a chromatic scale starting on G2 and ascending to G3. The notes are: G, G $\sharp$ , A, A $\sharp$ , B, B $\sharp$ , C. The staff is divided into four measures, with measure numbers 1, 2, 3, and 4 written below the notes.

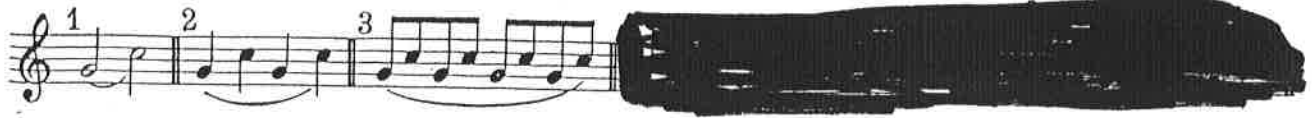
A musical staff in bass clef with a common time signature (C). It contains a chromatic scale starting on C and ascending to C3. The notes are: C, C $\sharp$ , D, D $\sharp$ , E, E $\sharp$ , F. The staff is divided into four measures, with measure numbers 5, 6, 7, and 8 written below the notes.

A musical staff in bass clef with a common time signature (C). It contains a chromatic scale starting on F and ascending to F3. The notes are: F, F $\sharp$ , G, G $\sharp$ , A, A $\sharp$ , B. The staff is divided into two measures, with measure numbers 9 and 10 written below the notes.

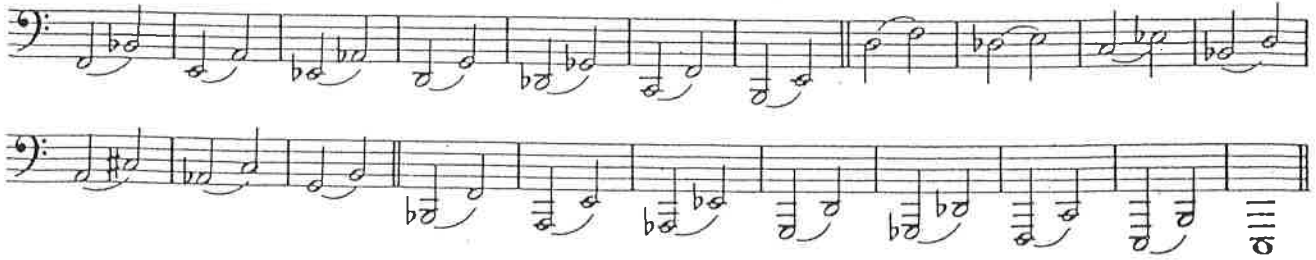
SECTION 7  
Exercise on the Slur

- ① Play all pattern 1
- ② Play all pattern 2 <sup>27</sup>
- ③ Play all pattern 3

Here are a few different models to use in playing this section.



BB $\flat$  Basses



# SECTION 9

Class

## Fundamental Rhythms

73 74 75 76 77 78

73 74 75 76 77 78

80 81 82 83 84

80 81 82 83 84

85 86 87 88 89 90

85 86 87 88 89 90

91 92 93 94 95 96

91 92 93 94 95 96

97 98 99 100 101 102

97 98 99 100 101 102

103 104 105 106 107 108

103 104 105 106 107 108

109 110 111 112 113 114

109 110 111 112 113 114

116 117 118 119 120

116 117 118 119 120

121 122 123 124 125 126

121 122 123 124 125 126

127 128 129 130 131<sub>3</sub> 132<sub>3</sub>

127 128 129 130 131<sub>3</sub> 132<sub>3</sub>

218 219 220 221 222 223 224 225

218 219 220 221 222 223 224 225

226 227 228 229 230 231

226 227 228 229 230 231

# SECTION 5

## Arpeggios

This page for  
BASSES ONLY

Piccolos turn to— page 19  
Flutes turn to— page 19  
Violins turn to— page 19  
Saxophones turn to page 20  
Oboes turn to— page 20  
Clarinets turn to— page 18  
Cornets turn to— page 21  
Trombones turn to page 22  
Baritones turn to— page 22  
Horns turn to— page 21  
Bassoons turn to— page 22

*(Use different articulations)*

Upper notes for String Bass

4 

5 

9 

10 

# Thirds

tuba

3<sup>b</sup>

Handwritten musical notation for tuba, system 1. It consists of two staves in bass clef with a key signature of two flats (Bb, Eb) and a common time signature (C). The top staff contains a melodic line with eighth and quarter notes, while the bottom staff contains a rhythmic accompaniment of eighth notes.

1<sup>b</sup>

Handwritten musical notation for tuba, system 2. It consists of two staves in bass clef with a key signature of two flats (Bb, Eb) and a common time signature (C). The top staff contains a melodic line with eighth and quarter notes, while the bottom staff contains a rhythmic accompaniment of eighth notes.

2<sup>b</sup>

Handwritten musical notation for tuba, system 3. It consists of two staves in bass clef with a key signature of two flats (Bb, Eb) and a common time signature (C). The top staff contains a melodic line with eighth and quarter notes, while the bottom staff contains a rhythmic accompaniment of eighth notes.

1<sup>b</sup>

Handwritten musical notation for tuba, system 4. It consists of two staves in bass clef with a key signature of two flats (Bb, Eb) and a common time signature (C). The top staff contains a melodic line with eighth and quarter notes, while the bottom staff contains a rhythmic accompaniment of eighth notes.

1<sup>b</sup>

Handwritten musical notation for tuba, system 5. It consists of two staves in bass clef with a key signature of two flats (Bb, Eb) and a common time signature (C). The top staff contains a melodic line with eighth and quarter notes, while the bottom staff contains a rhythmic accompaniment of eighth notes.