

Second Class Musician Requirements

2nd Nine Weeks

- 1 . Scales: Db, D, G, Gb
- 2 . Chromatic

3rd Nine Weeks

- 1 . Pass-off contest music
- 2 . Lip slur/ Finger exercise

4th Nine Weeks

- 1 . Terms Test
- 2 . Sight read in $\frac{3}{4}$ & Cut Time
- 3 . Rhythms - write in counts, students will be asked to clap a sample.
- 4 . Arpeggios
- 5 . Thirds

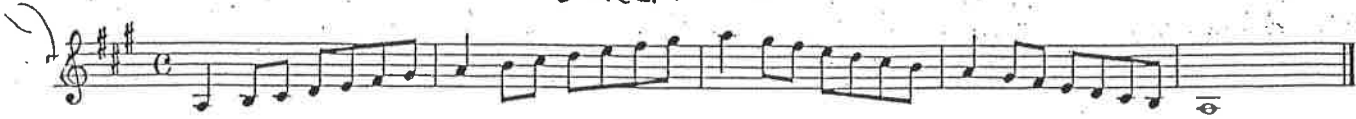
All pass-offs must be completed within the nine weeks indicated and each item counts as a test grade. All scales must be played the full range of your instrument.

Full Range Scales

In All Twelve Major Key Signatures

Trumpet

Concert G



Concert D



Concert G^b



Concert D^b



Full Range Chromatic - For Trumpets Only



SECTION 7

Exercise on the Slur

Percussion players see page 54

INSTRUCTIONS: Note that each instrument is scored in unison or octave with all other instruments.

① play all using pattern 1

② play all using pattern 2

③ play all using pattern 3.

Here are a few different models to use in playing this section.

A musical staff in treble clef showing three numbered patterns: 1 (quarter note), 2 (quarter note), and 3 (quarter note). The rest of the staff is heavily scribbled out with black ink.

~~_____~~, Trumpets ~~_____~~

A musical staff in treble clef for Trumpets. It contains several measures of music with notes, slurs, and accidentals (sharps and flats).

A musical staff in treble clef with notes, slurs, and accidentals (sharps and flats).

SECTION 9

Fundamental Rhythms

73 74 75 76 77 78

80 81 82 83 84

85 86 87 88 89 90

91 92 93 94 95 96

97 98 99 100 101 102

103 104 105 106 107 108

109 110 111 112 113 114

116 117 118 119 120

121 122 123 124 125 126

127 128 129 130 131₃ 132₃

218 219 220 221 222 223 224 225

226 227 228 229 230 231

SECTION 5

Arpeggios

This page for
CORNETS & ~~SAXOPHONES~~
ONLY

Piccolos turn to_ page 19
Flutes turn to_ page 19
Violins turn to_ page 20
Saxophones turn to page 20
Clarinetts turn to_ page 18
Trombones turn to page 22
Oboes turn to_ page 20
Baritones turn to_ page 22
Bassoons turn to_ page 22
Cellos turn to_ page 22
Basses turn to_ page 23

(Use different articulations)

Cornet 1
Bb-4 }
Eb-3 }
F-5 }



Cornet 2
Bb-5 }
Eb-4 }
F-6 }



Cornet 3
Bb-9 }
Eb-8 }
F-10 }



Cornet 4
Bb-10 }
Eb-9 }
F-11 }



Trumpet

3RDS

Bb (C)

A musical staff in treble clef with a key signature of one flat (Bb) and a common time signature. The melody consists of eighth and quarter notes, with some notes beamed together in pairs. The staff ends with a double bar line.

Eb (F)

A musical staff in treble clef with a key signature of two flats (Eb) and a common time signature. The melody consists of eighth and quarter notes, with some notes beamed together in pairs. The staff ends with a double bar line.

A (Bb)

A musical staff in treble clef with a key signature of two flats (A) and a common time signature. The melody consists of eighth and quarter notes, with some notes beamed together in pairs. The staff ends with a double bar line.

G

A musical staff in treble clef with a key signature of one sharp (G) and a common time signature. The melody consists of eighth and quarter notes, with some notes beamed together in pairs. The staff ends with a double bar line.

C (D)

A musical staff in treble clef with a key signature of two sharps (C) and a common time signature. The melody consists of eighth and quarter notes, with some notes beamed together in pairs. The staff ends with a double bar line.