

Second Class Musician Requirements

2nd Nine Weeks

- 1 . Scales: Db, D, G, Gb
- 2 . Chromatic

3rd Nine Weeks

- 1 . Pass-off contest music
- 2 . Lip slur/ Finger exercise

4th Nine Weeks

- 1 . Terms Test
- 2 . Sight read in $\frac{3}{4}$ & Cut Time
- 3 . Rhythms *-write in counts, student will be asked to clap a sample,*
- 4 . Arpeggios
- 5 . Thirds

All pass-offs must be completed within the nine weeks indicated and each item counts as a test grade. All scales must be played the full range of your instrument.

French Horn

Full Range Scales

In All Twelve Major Key Signatures

Concert D

D/A

Concert G

Concert G^b

G^b/D^b

Concert D^b

D^b/A^b

Full Range Chromatic

1

2

3

4

5

6

7

8

9

10

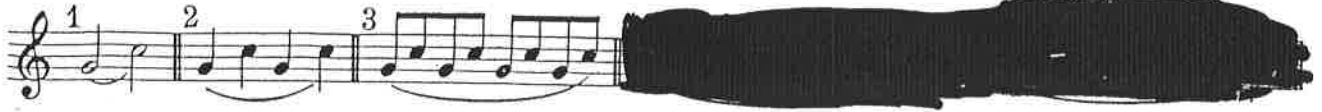
① Play all pattern 1

② Play all pattern 2

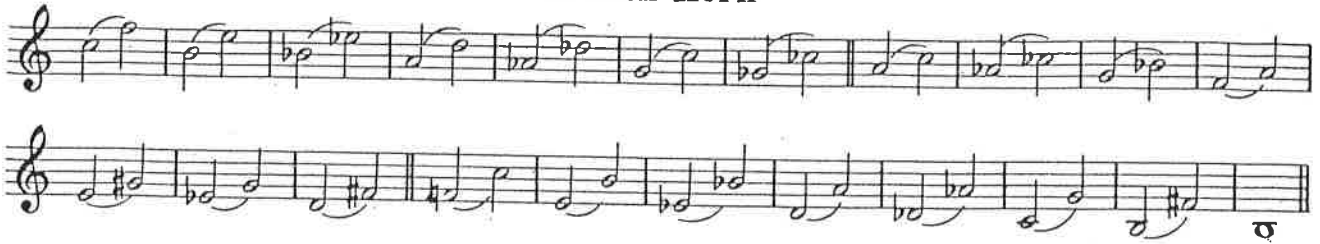
③ Play all pattern 3

SECTION 7
Exercise on the Slur

Here are a few different models to use in playing this section.



French Horn



SECTION 9

Fundamental Rhythms

73 74 75 76 77 78

80 81 82 83 84

85 86 87 88 89 90

91 92 93 94 95 96

97 98 99 100 101 102

103 104 105 106 107 108

109 110 111 112 113 114

116 117 118 119 120

121 122 123 124 125 126

127 128 129 130 131₃ 132₃

218 219 220 221 222 223 224 225

226 227 228 229 230 231

SECTION 5

Arpeggios

This page for
~~WOODWINDS~~ & HORNS
ONLY

Piccolos turn to— page 19
Flutes turn to— page 19
Violins turn to— page 19
Saxophones turn to page 20
Clarinetts turn to— page 18
Trombones turn to page 22
Oboes turn to— page 20
Baritones turn to— page 22
Bassoons turn to— page 22

The image contains four musical staves, each representing a different horn part. Each staff begins with a horn symbol and a brace. The staves are labeled with their respective notes: C, D, G^b, and E^b. The music is written in treble clef with a 4/4 time signature. The key signature for the C and D parts is one sharp (F#), while the G^b and E^b parts are in two flats (B^b and E^b). The notation consists of a series of eighth notes forming an arpeggio pattern across four measures, followed by a double bar line and a final note. The notes in the C part are C4, D4, E4, F#4, G4, A4, B4, C5. The notes in the D part are D4, E4, F#4, G4, A4, B4, C5, D5. The notes in the G^b part are G^b3, A^b3, B^b3, C4, D4, E4, F#4, G4. The notes in the E^b part are E^b3, F^b3, G^b3, A^b3, B^b3, C4, D4, E4.

french horn

3RDS

Bb (F)



Eb (Eb)



Ab (Eb)



F (C)



C (G)

