

Second Class Musician Requirements

2nd Nine Weeks

- 1 . Scales: Db, D, G, Gb
- 2 . Chromatic

3rd Nine Weeks

- 1 . Pass-off contest music
- 2 . Lip slur/ Finger exercise

4th Nine Weeks

- 1 . Terms Test
- 2 . Sight read in $\frac{3}{4}$ & Cut Time
- 3 . Rhythms - write in counts, student will be asked to clap a sample
- 4 . Arpeggios
- 5 . Thirds

All pass-offs must be completed within the nine weeks indicated and each item counts as a test grade. All scales must be played the full range of your instrument.

Full Range Scales

Janitone T.C.

In All Twelve Major Key Signatures

A

A musical staff in treble clef with a key signature of three sharps (F#, C#, G#) and a common time signature. It contains a full range scale starting on C4 and ending on C5. The notes are: C4, D4, E4, F#4, G4, A4, B4, C5. The scale is written in a single line with a final double bar line.

E

A musical staff in treble clef with a key signature of four sharps (F#, C#, G#, D#) and a common time signature. It contains a full range scale starting on C4 and ending on C5. The notes are: C4, D4, E4, F#4, G4, A4, B4, C5. The scale is written in a single line with a final double bar line.

G/A

A musical staff in treble clef with a key signature of two sharps (F#, C#) and a common time signature. It contains a full range scale starting on C4 and ending on C5. The notes are: C4, D4, E4, F#4, G4, A4, B4, C5. The scale is written in a single line with a final double bar line.

D/E

A musical staff in treble clef with a key signature of two sharps (F#, C#) and a common time signature. It contains a full range scale starting on C4 and ending on C5. The notes are: C4, D4, E4, F#4, G4, A4, B4, C5. The scale is written in a single line with a final double bar line.

Full Range Chromatic - Euphoniums Only

A musical staff in treble clef with a common time signature. It contains a full range chromatic scale starting on C4 and ending on C5. The notes are: C4, C#4, D4, D#4, E4, E#4, F4, F#4, G4, G#4, A4, A#4, B4, B#4, C5. The scale is written in a single line with a final double bar line.

A musical staff in treble clef with a common time signature. It contains a full range chromatic scale starting on C4 and ending on C5. The notes are: C4, C#4, D4, D#4, E4, E#4, F4, F#4, G4, G#4, A4, A#4, B4, B#4, C5. The scale is written in a single line with a final double bar line.

A musical staff in treble clef with a common time signature. It contains a full range chromatic scale starting on C4 and ending on C5. The notes are: C4, C#4, D4, D#4, E4, E#4, F4, F#4, G4, G#4, A4, A#4, B4, B#4, C5. The scale is written in a single line with a final double bar line.

SECTION 7

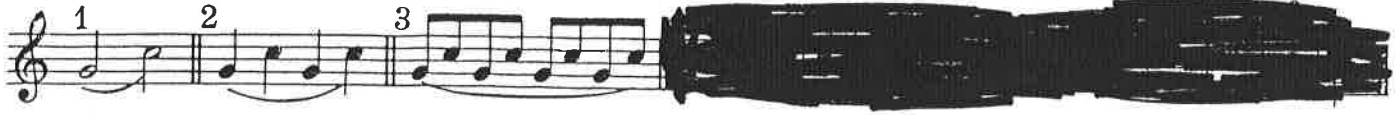
Exercise on the Slur

Percussion players see page 54

INSTRUCTIONS: Note that each instrument is scored in unison or octave with all other instruments.

- ① Play all pattern 1
- ② Play all pattern 2
- ③ Play all pattern 3

Here are a few different models to use in playing this section.



B \flat Cornets, Trumpets and Baritones



SECTION 9

Fundamental Rhythms

73 74 75 76 77 78

80 81 82 83 84

85 86 87 88 89 90

91 92 93 94 95 96

97 98 99 100 101 102

103 104 105 106 107 108

109 110 111 112 113 114

116 117 118 119 120

121 122 123 124 125 126

127 128 129 130 131₃ 132₃

218 219 220 221 222 223 224 225

226 227 228 229 230 231

SECTION 5

Arpeggios

This page for
~~CONTRABASS~~ ~~VIOLIN~~ ~~VIOLA~~ ~~CELLO~~ ~~BASS~~ ~~TRUMPET~~ ~~TROMBONE~~ ~~SAXOPHONE~~ ~~CLARINET~~ ~~OBOE~~ ~~BASSOON~~ ~~PICCOLO~~ ~~FLUTE~~ ~~VIOLIN~~ ~~VIOLA~~ ~~CELLO~~ ~~BASS~~ ~~TRUMPET~~ ~~TROMBONE~~ ~~SAXOPHONE~~ ~~CLARINET~~ ~~OBOE~~ ~~BASSOON~~ ~~PICCOLO~~ ~~FLUTE~~
ONLY

Piccolos turn to page 19
Flutes turn to page 19
Violins turn to page 19
Saxophones turn to page 20
Clarinet turn to page 18
Trombones turn to page 22
Oboes turn to page 20
Baritones turn to page 22
Bassoons turn to page 22
Cellos turn to page 22
Basses turn to

(Use different articulations)

The image shows four musical staves, each with a treble clef and a 4/4 time signature. Each staff begins with a key signature and a brace indicating the instrument part. The first staff is for C major (one flat) and contains a sequence of arpeggiated chords. The second staff is for D major (two sharps) and contains a sequence of arpeggiated chords. The third staff is for G major (two sharps) and contains a sequence of arpeggiated chords. The fourth staff is for D major (two sharps) and contains a sequence of arpeggiated chords. Each staff ends with a double bar line and repeat dots.

Thirds

Bass Clarinet
Bartone $\text{\textcircled{F}}$ / Tenor Sax

Handwritten musical notation for the first system, featuring two staves in C major with a common time signature. The notation consists of eighth and quarter notes, with some beamed eighth notes in the upper staff.

Handwritten musical notation for the second system, featuring two staves in B-flat major with a common time signature. The notation consists of eighth and quarter notes, with some beamed eighth notes in the upper staff.

Handwritten musical notation for the third system, featuring two staves in B-flat major with a common time signature. The notation consists of eighth and quarter notes, with some beamed eighth notes in the upper staff.

Handwritten musical notation for the fourth system, featuring two staves in D major with a common time signature. The notation consists of eighth and quarter notes, with some beamed eighth notes in the upper staff.

Handwritten musical notation for the fifth system, featuring two staves in D major with a common time signature. The notation consists of eighth and quarter notes, with some beamed eighth notes in the upper staff.